

REUSE NETWORK IN SLOVENIA

Project “USE REUSE”

KATJA ZAJKO, project manager

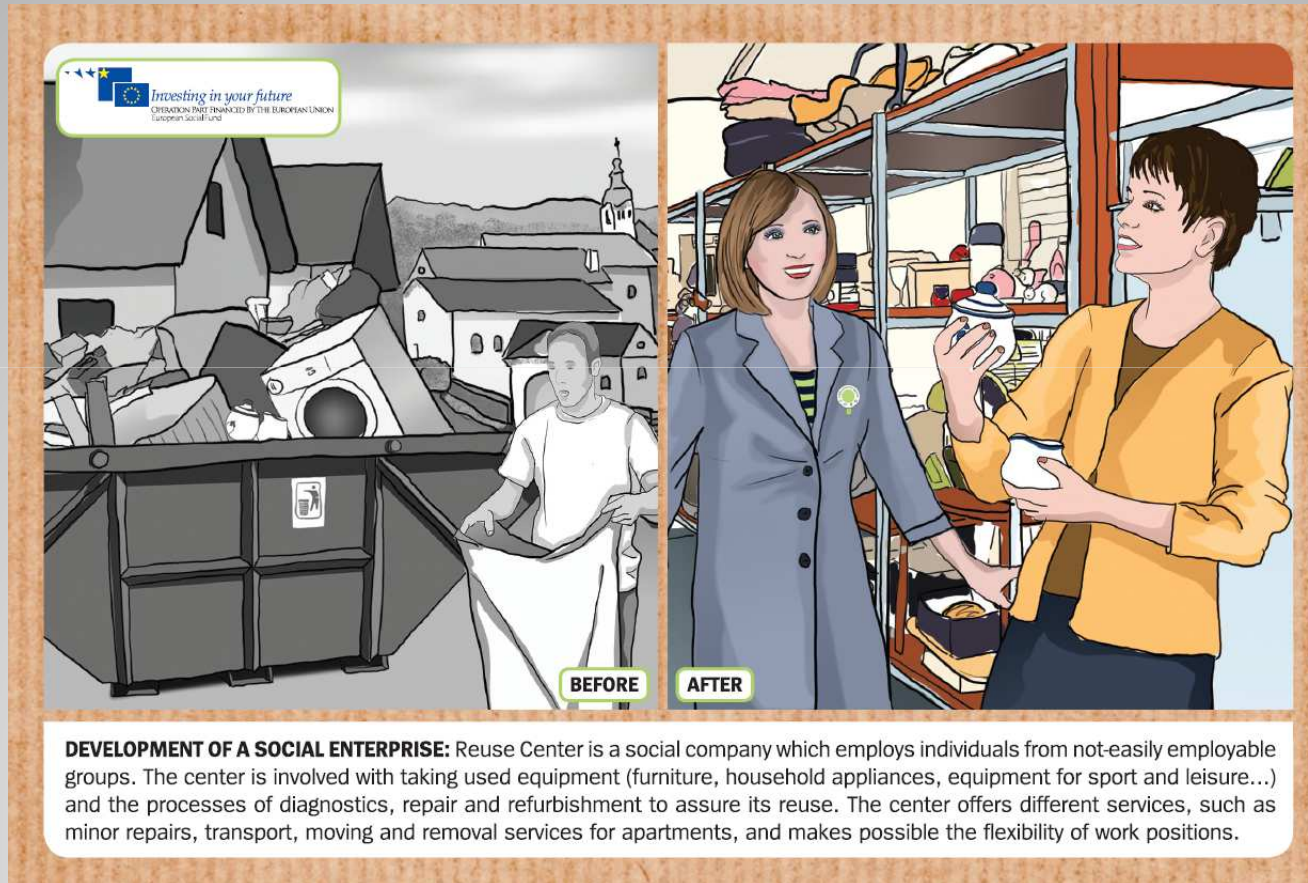


Environmental Research
Institute



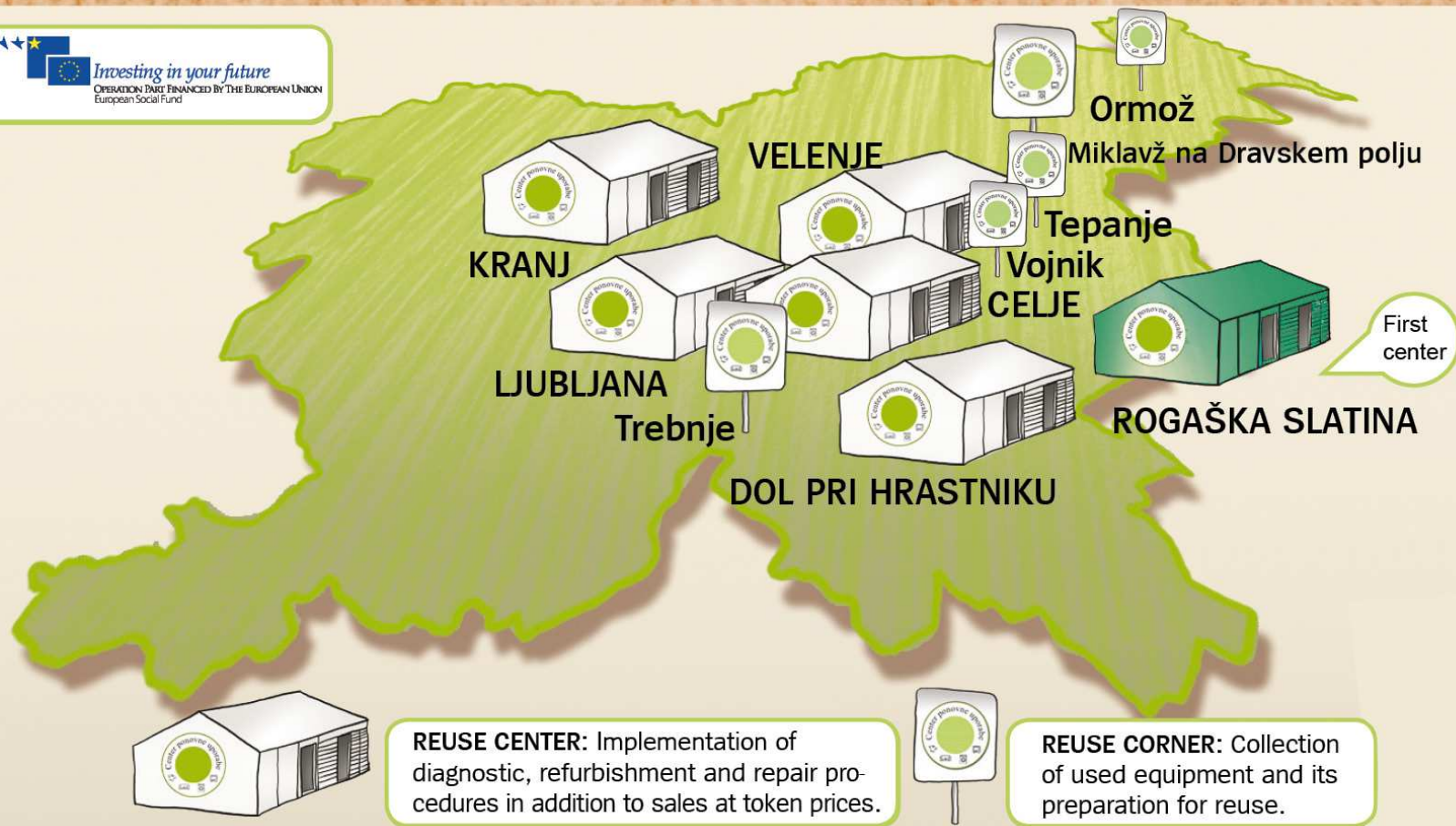
Maribor, 18.9.2013

Aim of project: Develop business in the field of reuse and employ disadvantaged persons



- Value: app. 800.000 €
- Duration: 4 years (3.12.2010 – 3.12.2014)
- Founded: by European Social Found & Ministry for labor, family and social affairs Slovenia
- Other grants
- Providing other environmental services (environmental permissions,...)

Vision: to become a leading provider of reuse business in Slovenia and include disadvantaged persons into the labor market



REUSE CENTER: Implementation of diagnostic, refurbishment and repair procedures in addition to sales at token prices.



REUSE CORNER: Collection of used equipment and its preparation for reuse.

ASSOCIATED PARTNERS IN THE PROJECT USE REUSE: Simbio d.o.o. Celje, Velenje Municipality, Komunala Trebnje d.o.o., Municipality Miklavž na Dravskem polju, Komunala Kranj d.o.o., Snaga d.o.o. Ljubljana, and KAIJ d.o.o. Dol pri Hrastniku. They will be contributing toward the realization of the fundamental goal of the project, at their locations we will establish the operating conditions of the new Reuse Centers which will be developed as social enterprises which give preference to the growth of social capital.

RREUSE network

- 42.000 full time employees
- 200.000 volunteers
- 22 members in network



Why we joined the network?

- environmental protection: waste prevention and sustainable management
- social equity: social inclusion activities and affordable goods
- economic viability: job creation and training opportunities

INDICATORS OF THE PROJECT "USE-REUSE"

<i>Number of disadvantaged persons (women) included in the project</i>	6
<i>Number of disadvantaged persons (young) included in the project</i>	2
<i>Regions included in the project</i>	<i>Savinjska, Osrednjeslovenska, Jugovzhodna Slovenija, Gorenjska, Podravska in Zasavska regija</i>
<i>Number of new green jobs</i>	6
<i>Other indicators</i>	<i>Good practice: -Expanded reuse centers to 7 new locations -Upgrade of reuse network -Joining in international network – RREUSE</i>
<i>Number of new reuse centers</i>	7
<i>Established network of reuse centers</i>	1
<i>Number of volunteers</i>	50
<i>Market potential for reuse products</i>	750,000
<i>Potential of products for reuse</i>	4,500 tonnes/year
<i>Percentage of reuse</i>	90%

More information:

Environmental Research Institute

Spodnje Preloge 55, 3210 Slov. Konjice,
Slovenia

tel. +386 3 759 00 50 or +386 3 752 07 90

www.orz.si,

e-mail: katja.zajko@orz.si



THANK YOU FOR YOUR ATTENTION!