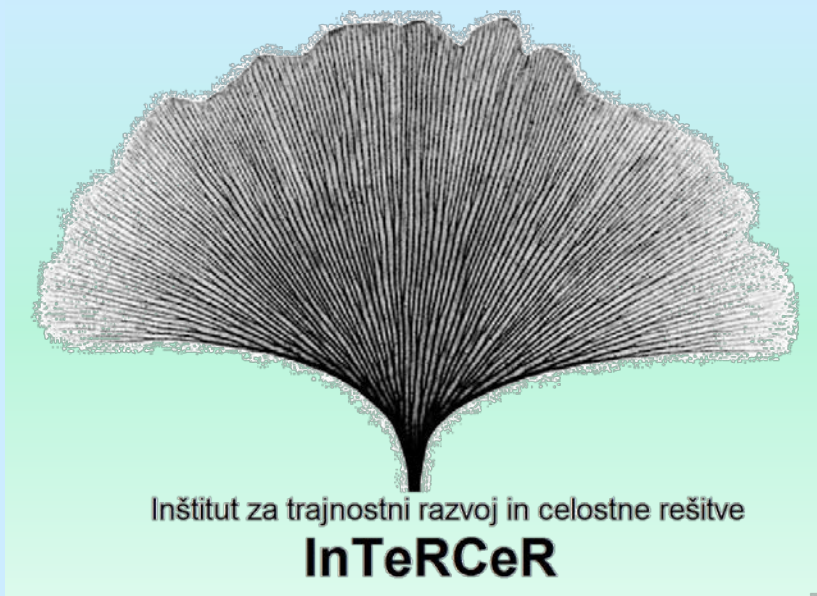


Integration and empowerment of socially disadvantaged groups in cities and rural areas for the high-quality local food production



Inštitut InTeRCeR
Kmetijsko-gozdarski zavod Maribor
Društvo gibanje za trajnostni razvoj Slovenije - TRS



TRS

Give a man a fish and you feed him for a day. Teach a man to fish and you feed him for a lifetime.

What ?

High-quality local food production

- We want to connect to the elderly who live alone in rural areas and have land and knowledge, but can no longer cultivate the land, with the unemployed in the city that have no land and no knowledge about the cultivation of land.
- By joining the project participants would on the one hand increase food production and self-sufficiency and reduce the cost of purchasing their own food, and on the other hand, through the activation and the establishment of new social contacts become acquainted with a variety of opportunities to take part in the production and new economic and organizational models.



Maribor – the first integral city



Where ?

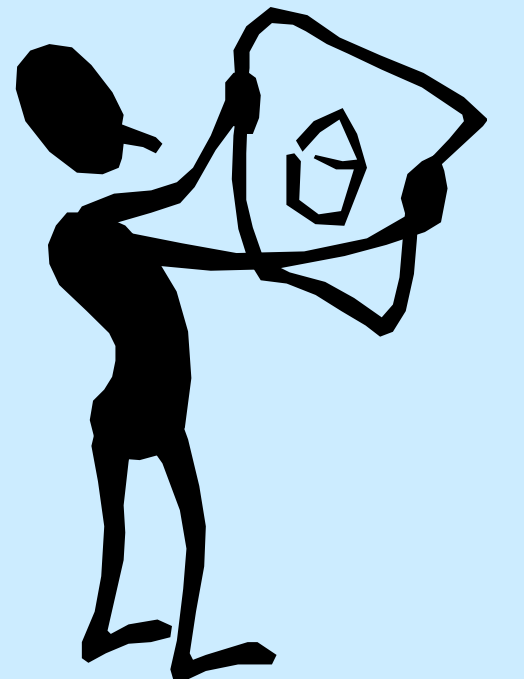
Arable lands in the proximity of Maribor

- Traditional small multipurpose agricultural land owned by elderly farmers.
- Badly managed overgrown land in the state ownership.
- Abandoned agricultural land.

When ?

Four seasons

- Minimum 2 years pilot project.
- Establishing long term partnerships.
- Development of new partnership and (CSA) models of cooperation.
- Extension to other regions.



Why ?

Improving social status of people

- The number of socially endangered elderly farmers in rural areas, usually older than 60 years, is increasing. They lived on the farm at a time when there was no intensive farming and no predominant use of plant protection products and fertilizers. They have the land and ancestral knowledge about sustainable cultivation of land, but this knowledge is, due to the inability of the elderly to work on land, getting lost. Consequently, it comes to the abandonment of cultivated agricultural land.
- In the cities we have an increase of unemployed people who have no land that could be cultivated and are without practical knowledge of sustainable cultivation of land (ie organic farming). Their social status is at risk.

More than 60% of Slovenia covered with forests and growing



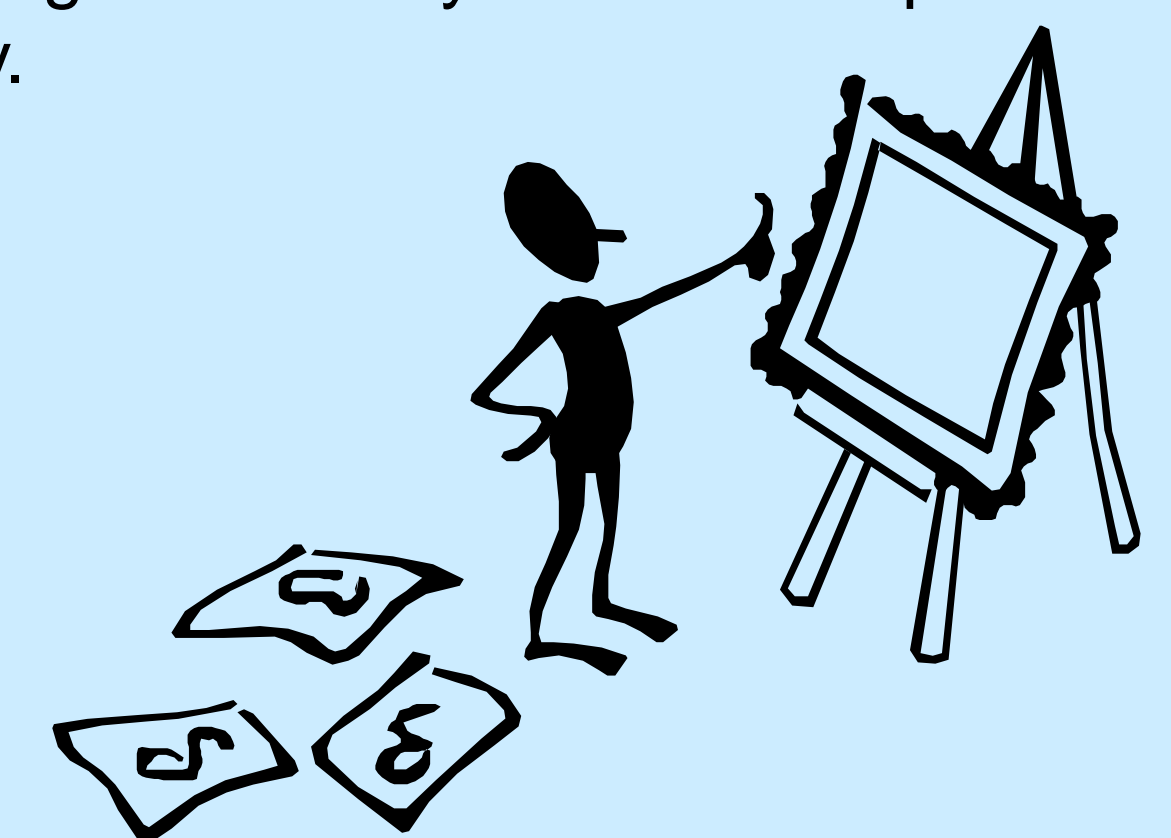
Traditional cultural landscapes disappearing, resulting in lower biodiversity and decreased potential for eco-tourism.



South ?

Nature and community

- Self sufficient community based economy.
- Addressing unemployment and material needs.
- Restoring traditional agricultural practices and cultural landscapes.
- Increasing biodiversity and landscape diversity.



Who ?

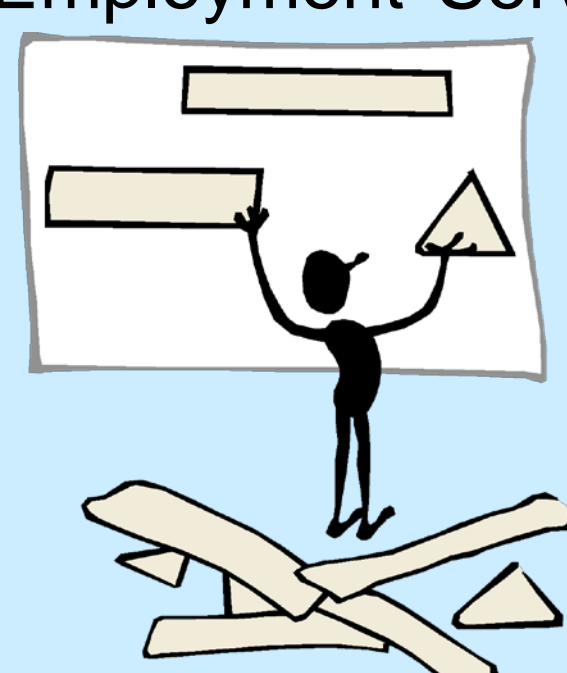
Target groups

- Unemployed people in urban centers - Maribor (unemployment rate over 16%).
- Older owners of agricultural land.

How ?

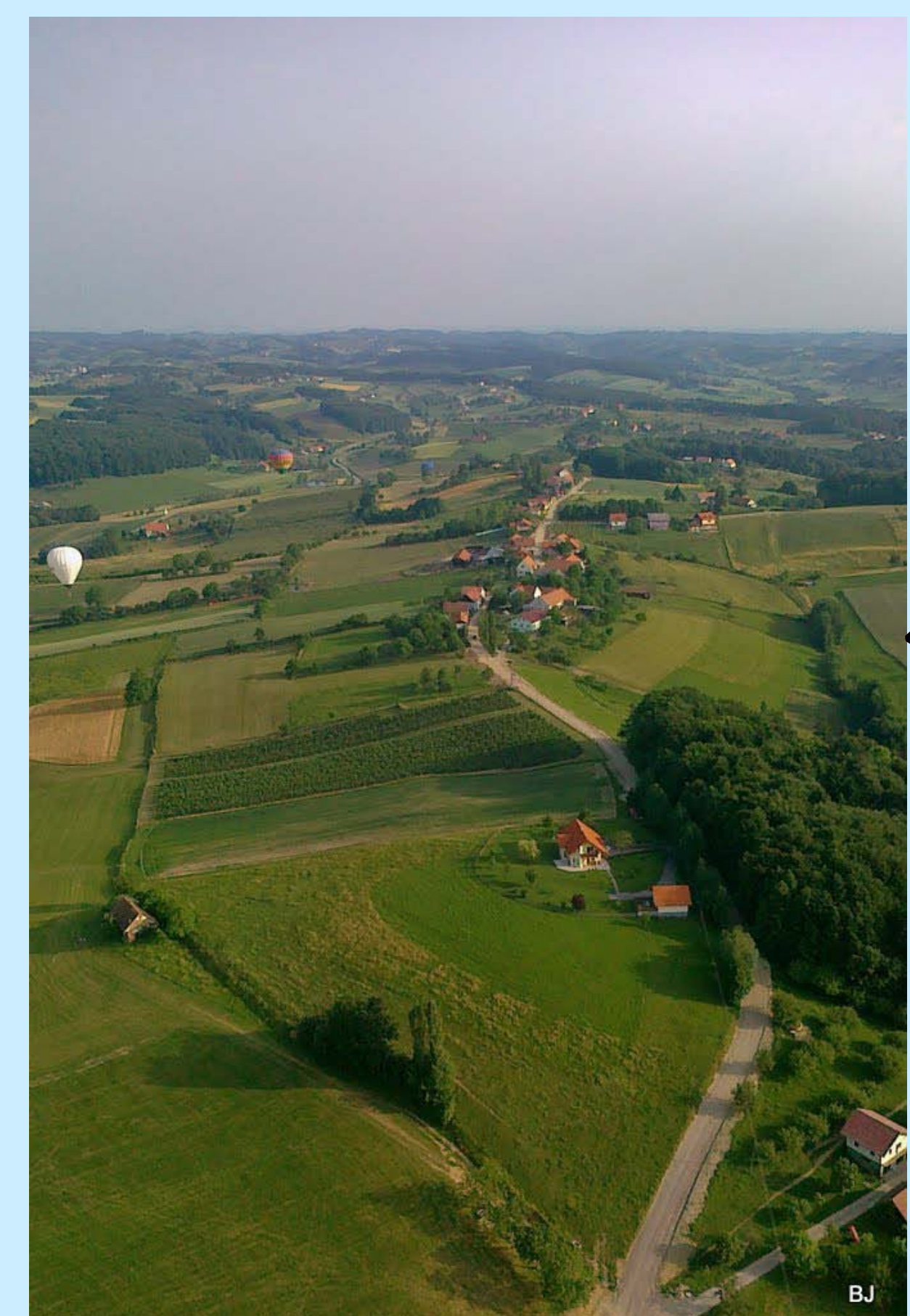
Intergenerational cooperation

- Transfer of knowledge and skills to produce high-quality local food and thereby increase food self-sufficiency will be made through intergenerational cooperation by linking up these two groups.
- With support of the Employment Service of Slovenia.



Kje so tiste stezice, ki so včasih bile, zdaj pa raste grmovje in zelene trave, zdaj pa raste grmovje in zelene trave.

Bom grmovje posekal, travco požel, bom naredil stezice, ki so včasih bile, bom naredil stezice, ki so včasih bile.



Contact: klemen.bizjak@gmail.com
iztokerjavec@gmail.com